

FACT SHEET

# WOW CONVENTION CENTER



*Wow*

ISTANBUL  
Hotels & Convention Center

# WOW CONVENTION CENTER

**Address** : WOW Convention Center Yeşilköy Mahallesi  
Atatürk Caddesi 34149  
No: 15-17-19 Bakırköy / İstanbul

**Tel** : 00 90 212 468 50 00

**Fax** : 00 90 212 465 06 75

**Website** : [www.wowhotelsistanbul.com](http://www.wowhotelsistanbul.com)

**E-mail** : [info@wowhotelsistanbul.com](mailto:info@wowhotelsistanbul.com)

**Social Media Accounts** : [Facebook.com/wowistanbul](https://www.facebook.com/wowistanbul)  
[Twitter.com/wowistanbul](https://twitter.com/wowistanbul)  
[Instagram.com/wowistanbul](https://www.instagram.com/wowistanbul)  
[Linkedin.com/company/wowistanbul](https://www.linkedin.com/company/wowistanbul)  
[Foursquare.com/wowistanbul](https://www.foursquare.com/wowistanbul)  
[Vk.com/wowistanbul](https://www.vk.com/wowistanbul)  
[Youtube.com/wowistanbul](https://www.youtube.com/wowistanbul)

**Category** : A Block May 2007  
B Block Construction Beginning July 2011  
B Block Construction Ending March 2012

**Date of Construction** : May 2007

**Total Area** : 15.573 m<sup>2</sup>

**Meeting Area** : 6.500 m<sup>2</sup>

**Valid Credit Cards** : Amex, Diners, Visa, Master

**Working Hours** : Weekdays 08:30 - 18:00  
Saturday 09:00 - 14:00



# WOW CONVENTION CENTER

## General Information

WOW Convention Center is a convention center integrated with 4-star WOW Airport Hotel and 5-star WOW Istanbul Hotel, capable of hosting national and international congresses, company meetings, product promotion, dealers meetings, fair and wedding organizations. It is the biggest convention center of Istanbul having accommodation facility with total 635 rooms, 16 meeting halls in 6.500 square meter activity area, and capacity of 6.000 persons. The facility consists of two blocks. Safir Hall, Istanbul's biggest meeting hall with its 3.108 m<sup>2</sup> area, as well as Artemis, Zeus, Keops, Babil, İskenderiye and Rodos halls are located in A Block. Multi-purpose Yakut Hall having telescopic tribune system which can be opened and closed is located in WOW Convention Center B Block.

## Location

WOW Convention Center is at a walking distance to Istanbul Exhibition Center and CNR Expo Center where important fairs take place. Metro station linking to the city center is located in the garden of the facility.

## Distances

Istanbul International Airport	: 40 km / 50 minutes
City Center (Taksim)	: 20 km / 30 minutes
Bakırköy Sea Buses	: 10 km / 18 minutes
Ataköy Marina	: 9 km / 16 minutes
Sabiha Gökçen International Airport	: 60 km / 55 minutes

There is a paid shuttle service between Istanbul International Airport and WOW Istanbul Hotels & Convention Center at scheduled times every day.

# WOW CONVENTION CENTER A BLOCK

## USAGE AREA OF HALLS

	Safir	Zeus	Artemis	Keops	Babil	İskenderiye	Rodos
Area	3.108 m <sup>2</sup>	225 m <sup>2</sup>	180 m <sup>2</sup>	20 m <sup>2</sup>	52 m <sup>2</sup>	52 m <sup>2</sup>	20 m <sup>2</sup>

### Hall Features

#### Safir Hall

- 3.108 m<sup>2</sup> with no column
- Divisibility into 3 in 11 different styles
- Divisibility with separators those are soundproof up to 53 decibel
- 3 door entrances to Safir Hall
- 8,6 m ceiling height
- 1.260 m<sup>2</sup> foyer that can be divided into 3
- 3 different entrances to the foyer
- Two opposite symmetrical stage space of 146 m<sup>2</sup>
- Direct transition from parking garage to convention center foyer (moving staircase)
- Loading doors for material and equipment transfer to Safir Hall from outside

#### Artemis and Zeus Halls

- Divisibility into 3
- Divisibility with separators that are soundproof up to 53 decibel
- 4 m ceiling height
- 92 m<sup>2</sup> Artemis Hall foyer
- 93 m<sup>2</sup> Zeus Hall foyer

#### Keops - Babil - İskenderiye - Rodos Halls

- 4 meetings halls at the size of 20 m<sup>2</sup> - 52 m<sup>2</sup>
- Capacity varying between 5 to 50

### Doors and Size

#### Safir Hall Material Entrance Doors

2 entrance doors that enable material and equipment loading to Safir Hall at the size of 5,60 m x 4,20 m

#### Safir Hall Foyer Entrance Photocell Doors

3 entrance doors to the main building at the size of 1,60 m x 2,35 m

#### Safir Hall Foyer Entrance Doors

3 entrance doors from Foyer to Safir Hall at the size of 1,78 m x 2,20 m

### WOW Convention Center A Block Access

Access to all halls is provided with 3 photocell doors, and with staircases and moving staircases from the parking garage.

#### Access to Hotels

There is access from Safir Hall to the hotels.

# HALL CAPACITY VALUES

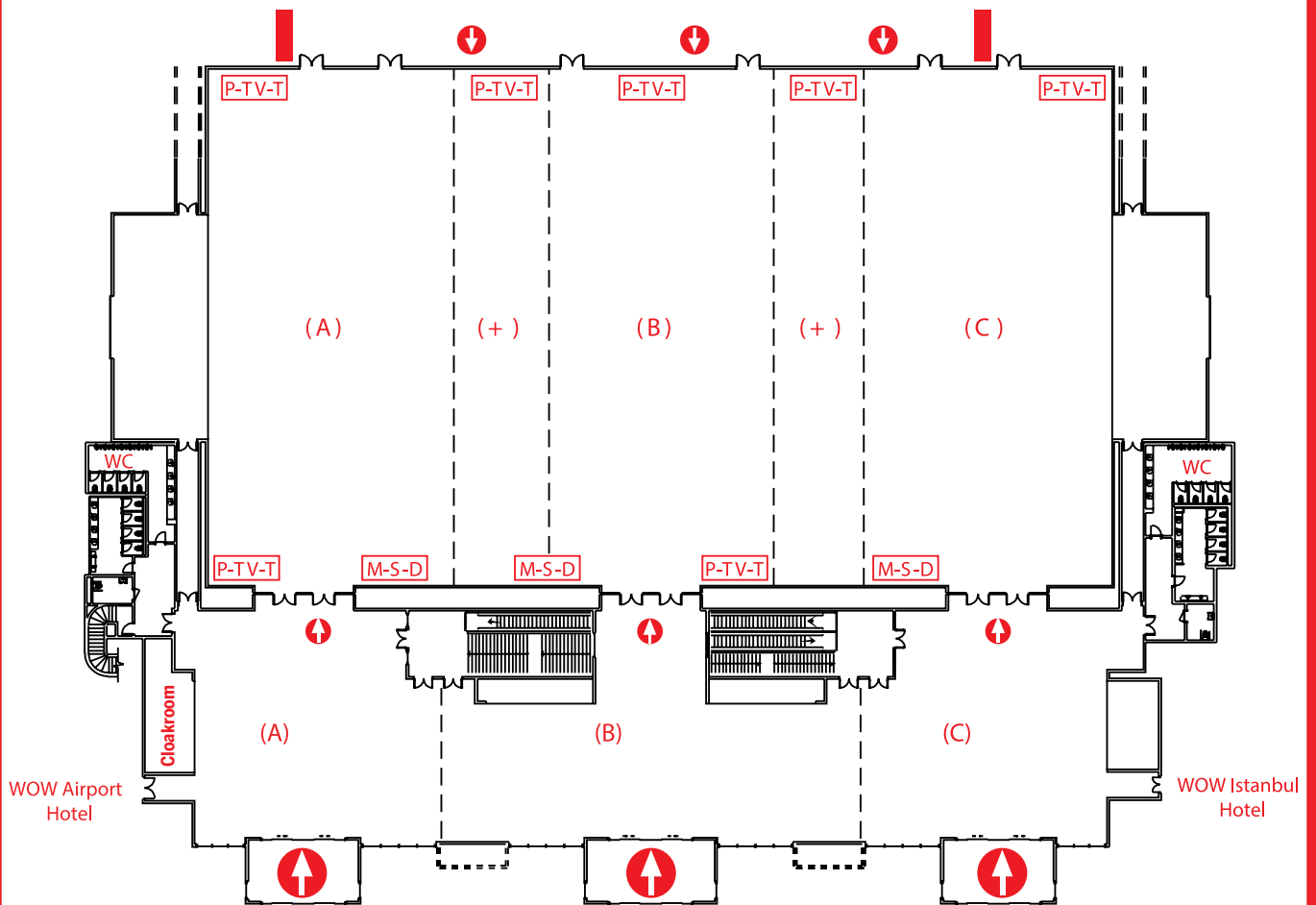
## WOW CONVENTION CENTER A BLOCK

### Ground Floor

	Area	Hall (M <sup>2</sup> )	Foyer (M <sup>2</sup> )	Height (M <sup>2</sup> )	Width (M)	Length (M)	Stage (Person)	Class (Person)	U Order (Person)	Banquet (Person)	Cocktail (Person)
Safir	A+B+C	3.108	1.260	8,6	42	74	4.000	1.980	-	2.000	3.000
	A	809	387	8,6	42	19,26	810	395	-	500	650
	A+	1.150	387	8,6	42	27,38	1.315	660	-	800	1.000
	A+B	1.958	858	8,6	42	46,61	2.380	1.090	-	1.400	1.600
	A+B+	2.298	858	8,6	42	54,71	2.920	1.385	-	1.420	2.000
	B	808	472	8,6	42	19,23	780	395	-	450	650
	B+	1.149	472	8,6	42	27,35	1.285	590	-	720	900
	+ B +	1.491	472	8,6	42	35,5	1.705	790	-	930	1.100
	B+C	1.916	866	8,6	42	45,61	2.380	1.090	-	1.400	1.600
	C	809	394	8,6	42	19,26	810	395	-	500	650
	C+	1.150	394	8,6	42	27,38	1.315	660	-	800	900
C+B+	2.299	866	8,6	42	54,73	2.920	1.385	-	1.420	2.000	
Zeus	A+B+C	225	93	4	10	22,5	235	155	65	140	150
	A	72	-	4	10	7,2	70	30	25	30	-
	B	81	-	4	10	8,1	85	45	30	40	-
	C	72	-	4	10	7,2	70	30	25	30	-
	AB	153	-	4	10	15,3	160	105	40	90	-
	BC	153	-	4	10	15,3	160	105	40	90	-
Artemis	A+B+C	180	92	4	9,6	18,7	195	120	55	110	100
	A	56	-	4	9,6	5,82	60	30	-	20	-
	B	56	-	4	9,6	5,82	60	30	-	20	-
	C	68	-	4	9,6	7,06	70	30	25	30	-
	AB	112	-	4	9,6	11,64	115	70	30	60	-
	BC	124	-	4	9,6	12,88	115	85	30	60	-
Mezzanine	Keops	20	-	2,4	3,6	5,5	15	-	10	-	-
	Babil	52	-	2,4	5,6	9,4	50	30	25	-	-
	İskenderiye	52	-	2,4	5,6	9,4	50	30	25	-	-
	Rodos	20	-	2,4	3,6	5,5	15	-	10	-	-

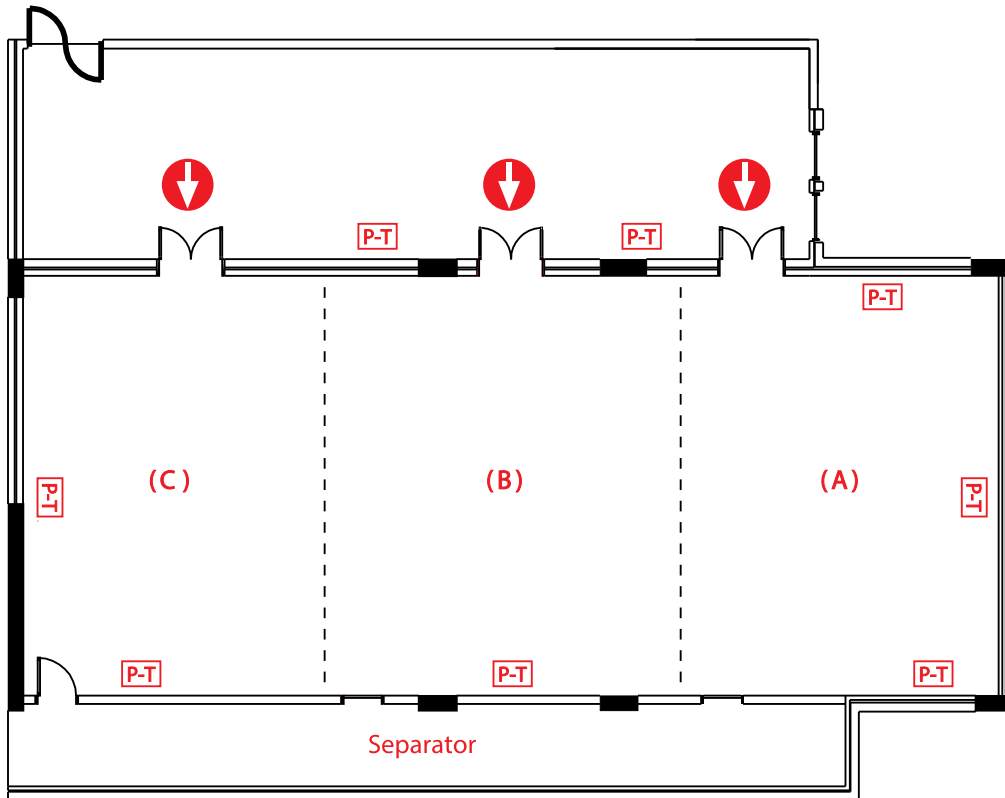


# A BLOCK SAFİR HALL



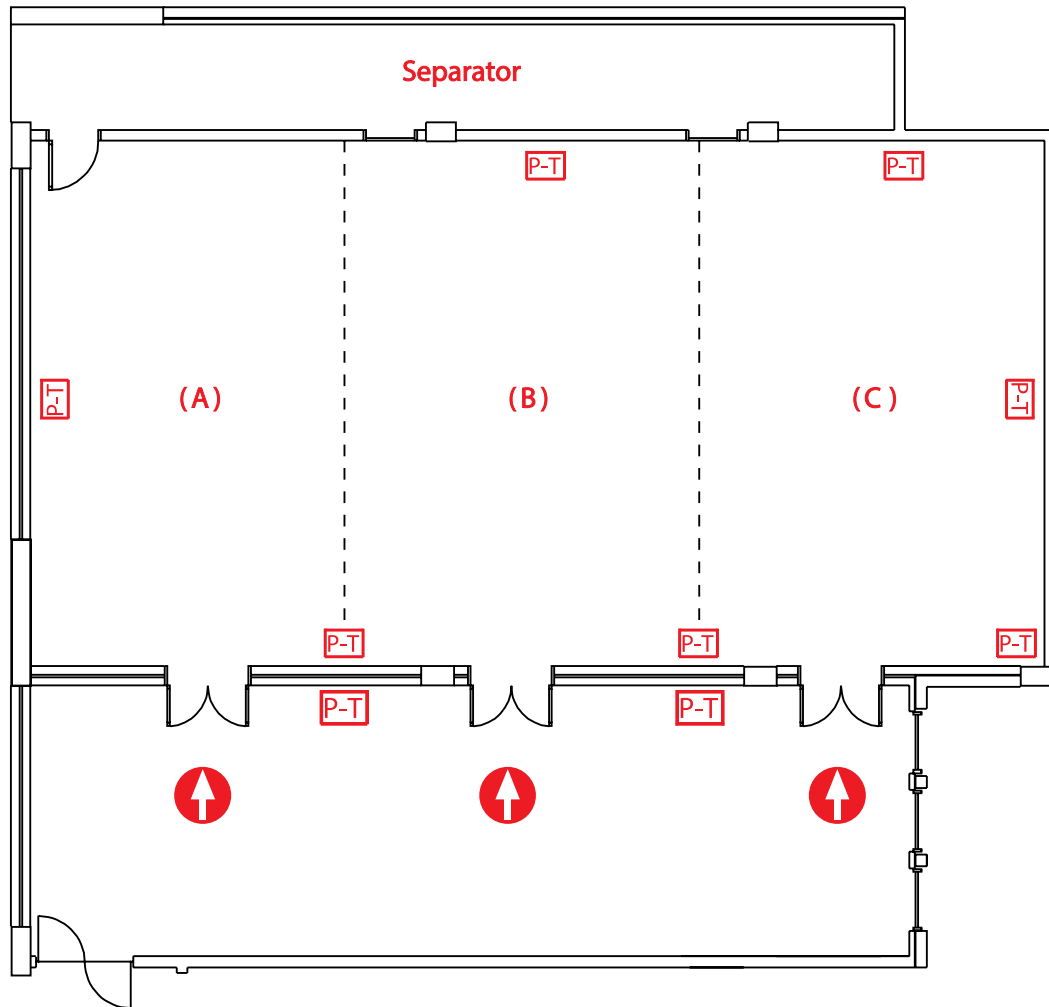
Width	: 42 m	P	: Electricity
Length	: 74 m	T	: Telephone - Data Line
Height min	: 7 m	M	: Music
Height max	: 8,6 m	S	: Sound Control
Area	: 3.108 m <sup>2</sup>	D	: Dimmer Control
Foyer	: 1.260 m <sup>2</sup>		

# A BLOCK ZEUS HALL



Width : 10 m      P : Electricity  
Length : 22,5 m    T : Telephone - Data Line  
Height min : 4 m  
Height max : 4 m  
Area : 225 m<sup>2</sup>  
Foyer : 93 m<sup>2</sup>

# A BLOK ARTEMIS HALL



Width : 9,6 m      P : Electricity  
Length : 18,7 m    T : Telephone - Data Line  
Height min : 4 m  
Height max : 4 m  
Area : 180 m<sup>2</sup>  
Foyer : 92 m<sup>2</sup>



# A BLOK MEZZANINE HALLS



## KEOPS

Width	: 3,6 m
Length	: 5,5 m
Height min	: 2,4 m
Height max	: 2,4 m
Area	: 20 m <sup>2</sup>

## BABIL

Width	: 5,6 m
Length	: 9,4 m
Height min	: 2,4 m
Height max	: 2,4 m
Area	: 52 m <sup>2</sup>

## ISKENDERIYE

Width	: 5,6 m
Length	: 9,4 m
Height min	: 2,4 m
Height max	: 2,4 m
Area	: 52 m <sup>2</sup>

## RODOS

Width	: 3,6 m
Length	: 5,5 m
Height min	: 2,4 m
Height max	: 2,4 m
Area	: 20 m <sup>2</sup>

P: Electricity

T : Telephone - Data Line



# WOW CONVENTION CENTER B BLOCK HALL CAPACITY VALUES

## WOW CONVENTION CENTER B BLOCK

### Ground Floor

	Areas	Hall (M <sup>2</sup> )	Height (M <sup>2</sup> )	Width (M <sup>2</sup> )	Length (M <sup>2</sup> )	Stage (Person)	Class (Person)	U Order (Person)	Banquet (Person)	Cocktail (Person)	Cocktail Prolonge (Person)
Yakut	A+B+C	1.098	6,7	27,8	39,5	1.200	756	165	750	1.000	800
	A	391	6,7	27,8	14,1	320	198	100	240	350	250
	B	395	6,7	27,8	14,25	320	198	100	240	350	250
	C	305	6,7	27,8	11	280	175	100	200	350	250
	AB	786	6,7	27,8	28,35	640	309	120	470	700	500
	BC	708	6,7	27,8	25,5	600	280	120	440	700	500
Foyer		385	3,8	7,75	49,45	-	-	-	-	330	250

### Ground Floor

#### Yakut Hall

- Telescopic tribune system which can be opened and closed
- 1.098 m<sup>2</sup> with no column
- Divisibility with separators those are soundproof up to 51 decibel
- 6,7 m ceiling height
- 385 m<sup>2</sup> foyer area

### Doors and Size

#### Yakut Hall Material Entrance Doors

Doors that enable material and equipment loading to Yakut Hall at the size of 3,98 m

#### Yakut Hall Foyer Entrance Photocell Doors

3 entrance doors at the size of 3,95 m x 2,50 m

#### Yakut Hall Foyer Entrance Doors

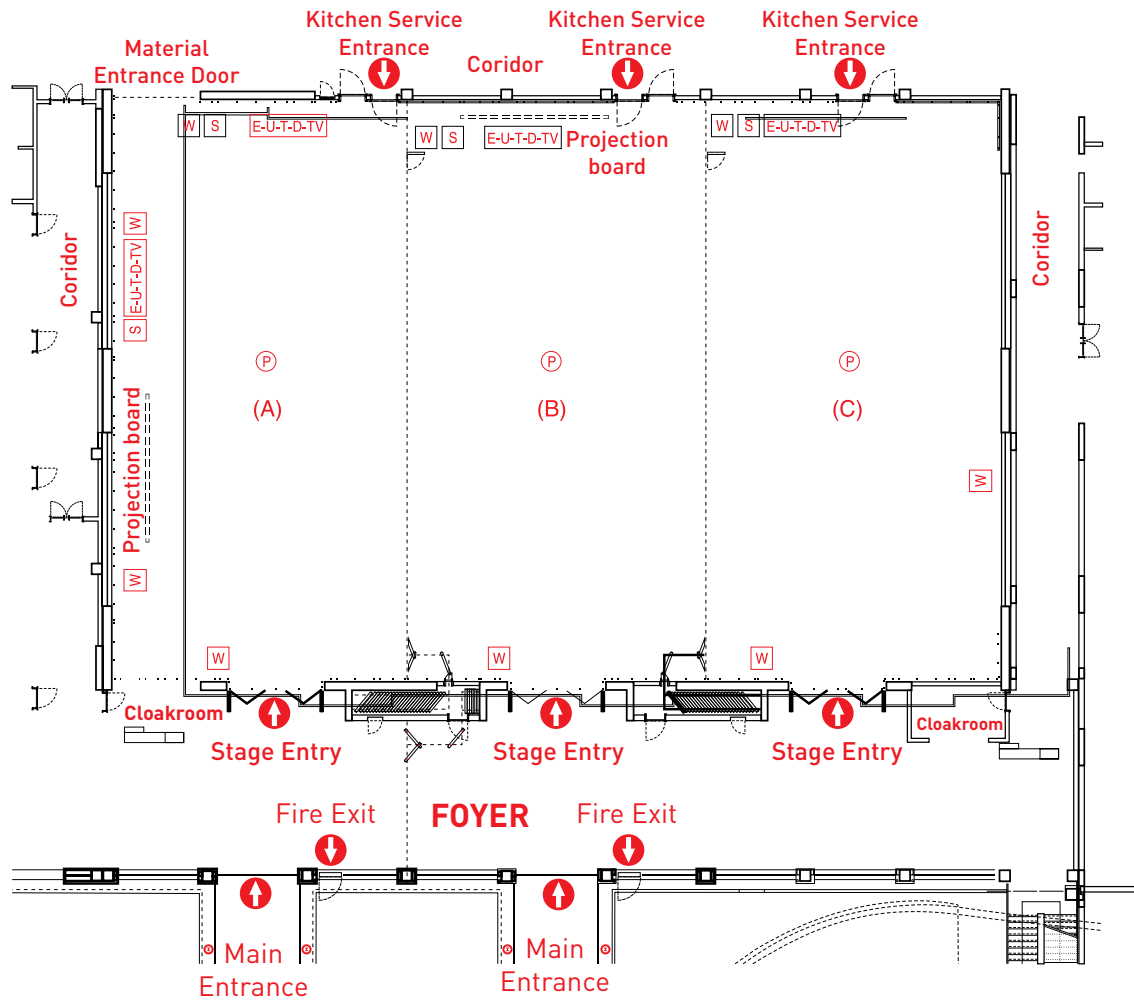
3 entrance doors from foyer to hall at the size of 4,70 m x 2,20 m

### WOW Convention Center B Block Access

Access to all halls is provided with 3 photocell doors, and with staircases from the parking garage.



# B BLOCK YAKUT HALL



Width : 27,80 m  
 Length : 39,50 m  
 Height min : 6,60 m  
 Height max : 6,70 m  
 Area : 1.098 m<sup>2</sup>  
 Foyer : 385 m<sup>2</sup>

E : Power Outlet (Network)  
 T : Telephone Line  
 U : UPS  
 TV : Television Socket  
 W : Wireless  
 S : Sound - Video  
 P : Projection  
 D : Data Line