

UniLodge @ RMIT Bundoora – Walert House

Short Stay Information Sheet

Overview

UniLodge @ RMIT Bundoora – Walert House is located at RMIT University – Bundoora West Campus and has been designed as a vibrant living and learning environment for local and international undergraduate and postgraduate students, PhD scholars and visitors to RMIT University.

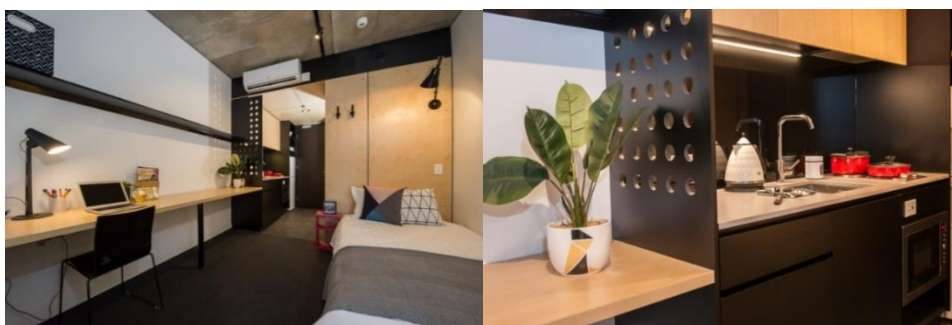
The facilities for all visitors, whether they be students, academics, researchers, or PhD scholars include:

- A fully equipped self-contained air-conditioned single studio apartment with an ensuite bathroom and kitchen.
- Excellent communal spaces for socialising and collaborative academic work
- Easy access to the RMIT University Bundoora East and West campuses
- An on-campus gym, football ovals, tennis courts and other sporting facilities.
- Access to the RMIT Wi-Fi network.

Qualifying as a 'short stay' resident

- RMIT students are eligible to stay in short stay accommodation from 1-7+ nights.
- All tertiary students are eligible to stay in short term accommodation from 7-28 nights.
- Visiting academics, researchers, and PhD scholars, please let your RMIT sponsoring school, academic/research collaborator or PhD supervisor know you'd like to stay with us. We will ask for your contact point at RMIT during the online application process and will follow up with them to confirm their endorsement of your residency.

Single Studio Apartment: Includes all utilities, continental breakfast on the first morning of your stay, kitchen utensils/crockery/cutlery, bathroom and bedroom linen.



Fees

Number of nights	Rate	Refundable bond
1	\$165	\$120
2	\$205	\$150
3	\$240	\$150
4	\$280	\$250
5	\$315	\$250
6	\$355	\$350
7	\$390	\$350

Features and Facilities

- Study and Meeting Rooms on Level 4 and 5. TV pods on Level 3.
- High level security with intercom, CCTV, swipe card access to the building and individual locks for apartments.
- Laundry on Level 4 with washer and dryers provided free of charge.
- Communal Kitchens on Level 2 and 6 with dishwashers and ovens (there is a basic kitchen in each Studio apartment).

Other Facilities

- Car parking available on campus (additional charges apply); <https://www.rmit.edu.au/students/support-and-facilities/campus-facilities/parking-at-bundoora-campus>
- Recreation and Social Space – RMIT University Bundoora West Campus is known for its sporting facilities.

Location

- Close to public transport – 850m away from Tram Stop 71 on Plenty Road, Route 86 to and from the Melbourne CBD and 160m away from the Bus Stop for Routes 382 and 564 to Northland Shopping Centre, Westfield Plenty Valley and South Morang Train Station.
- There is a courtesy shuttle bus service at the Bundoora campus from 5:00pm to 10:00pm, 7 days a week to take you to major transport, food and housing hubs during the night.
- Short walk to University Hill Shopping Centre.

Please Note:

- We are unable to offer a serviced apartment experience; therefore you will be responsible for your own laundry and apartment cleaning during your stay.
- Continental breakfast on the first night of your stay.
- Once your booking request has been received, you will be sent the Rules of Residence and Resident Handbook, which outlines essential information and a Refund Form (for your bond refund). All paperwork must be completed and returned to us prior to check in.
- Payment in full (including bond payment) to be made prior to check in.
- Cancellation Policy: 48 hours' notice of cancellation prior to check in date is required. If cancellation is less than 48 hours from check in date, a cancellation fee equivalent to the bond will be charged.

Operating Hours

Monday to Friday - 7.00am – 7.00pm

Saturdays - 10.00am – 4.00pm

Weekends & Public Holidays – Closed

24 Hours After-Hours Support

Contact Details

UniLodge @ RMIT Bundoora – Walert House

A: 345 McKimmies Rd Bundoora VIC 3083

T: +61 3 9998 8400

E: reservations.walERThouse@unilodge.com.au